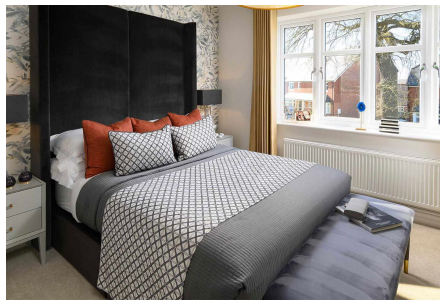


Prince's Chase, Leatherhead

£4,000PCM (Deposit: £4,615)

🛏️ 4 🍴 2 🚗 2



Tax Band: G Furnished: Unfurnished



Experience luxury living in this immaculate 4-bedroom home nestled in Berkley Homes' prestigious Prince's Chase development. Just minutes from Oxshott, Cobham, and Leatherhead, this 2,100 sq. ft. property offers spacious interiors with high-end finishes, including an expansive open-plan kitchen with premium quartz worktops and CAT6 connectivity throughout. The home features three king-sized bedrooms, a versatile fourth room, and a beautifully landscaped garden with a large patio and newly planted peach trees. With top-rated schools nearby and easy transport links to London, it's the perfect family residence combining convenience and tranquillity. Don't miss this rare opportunity—contact us today to arrange a viewing!

Transparency notice: Veritas Estates has a vested ownership interest in this property.



Key Features

- Prime Location
- Proximity to Top Schools
- Spacious Interior
- High End Finishes
- Energy Efficient
- Modern Connectivity
- Detached Garage & 2 additional parking places
- Landscaped gardens
- Private Development
- Open plan entertainment space

